



GENUINE PARTS

INSTALLATION INSTRUCTIONS

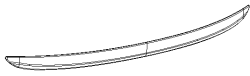
DESCRIPTION: Rear Hatch Accent

APPLICATION: VERSA NOTE

PART NUMBER: 999G8 4Z000

KIT CONTENTS:

Item	Qty.	Part Description	Service Part Number
A	1	Rear Hatch Accent	-
B	1	Instruction Replacement Template	-



A



B

TOOLS REQUIRED:

- Clean, Lint-Free Wiping Cloth
- 90% or Greater Isopropyl Alcohol
- Scale or Measuring Tape

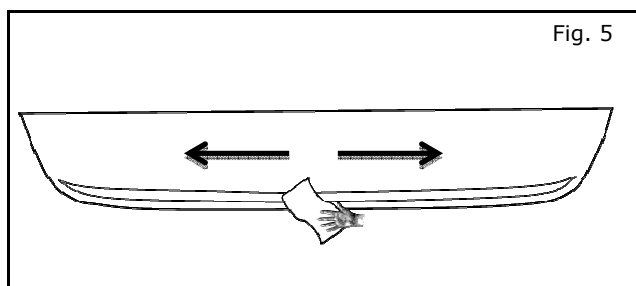
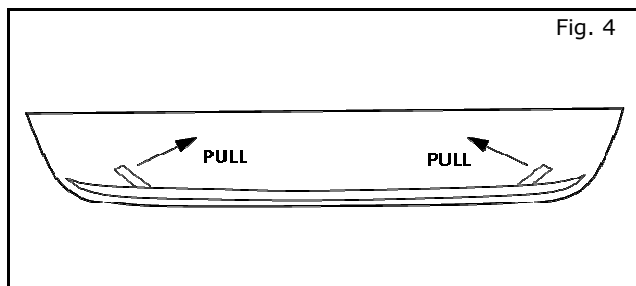
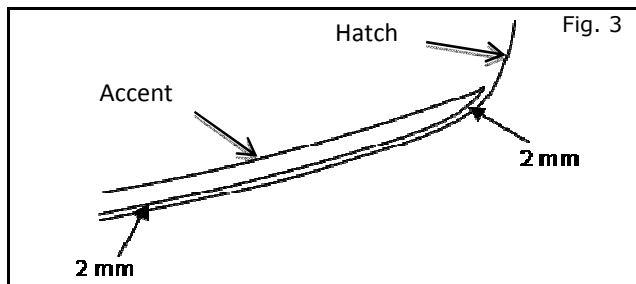
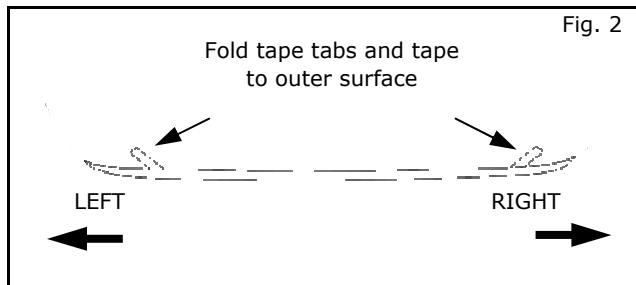
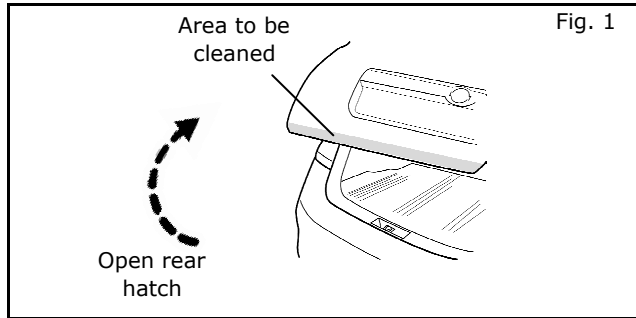
PRE-INSTALLATION WARNINGS, CAUTIONS, CRITICAL STEPS, and NOTES:

- Read the installation sheet and check the entire kit for possible damage or defects before performing any work.
- Dry fit all parts to become familiar with proper placement.

WARNING

- Do not touch the tape side with your fingers to avoid contaminating the tape and reducing adhesion strength
- These parts are to be installed when the ambient temperature is between 60°F - 110°F (16°C - 43°C).
- Do not wash or expose the vehicle to a wet environment for 24 hours after installing the Rear Hatch Accent.
- Install the Rear Hatch Accent in the correct position only after the alcohol has dried
- The tape will set in 15-20 seconds after the installation.
- Do not reposition the Rear Hatch Accent once the tape has started to set/adhere to vehicle.

INSTALLATION PROCEDURE:



CAUTION

Do not touch the vehicle plastic parts including tail lamp lenses with isopropyl alcohol to avoid potential damage.

- 1) Open rear hatch. Clean the area to be covered with the Rear Hatch Accent by using alcohol on a clean lint-free towel. (Fig. 1)
- 2) While cleaning the area shown in Fig. 1, use a new section of the towel when moving from area to area. Allow to dry for at least 2 minutes.
- 3) Remove protective film.
- 4) Peel back each tape tab approximately 30 mm and tape to outer surface. (Fig. 2)
- 5) Position the Accent on the rear hatch, maintaining an even gap of 2mm from the edge of the part to edge of hatch. (Fig. 3)
- 6) Adjust Accent as needed to assure proper location, with even spacing from edge of Accent to edge of hatch.
- 7) Hold accent firmly in position and pull tape liner at each end as shown in (Fig. 4) to remove.
- 8) Using a clean towel, apply firm and even pressure of 15 lbs. at the center of Accent surface and move outboard. Repeat this 3 times. (Fig. 5)

ACCESSORY CHECK:

- Confirm Rear Hatch Accent is properly adhered all around perimeter



CAUTION

Use caution when re-installing interior components to avoid damage, scratches, or breaking of mounting clips. Refer to the vehicle service manual for more information.

FINAL INSPECTION:

- Verify re-installed trim parts for proper flush fit (no gap, no waviness, etc.).
- Verify re-installed trim parts are free from cracks, scratches or stress marks.
- Verify interior and exterior is not damaged.